

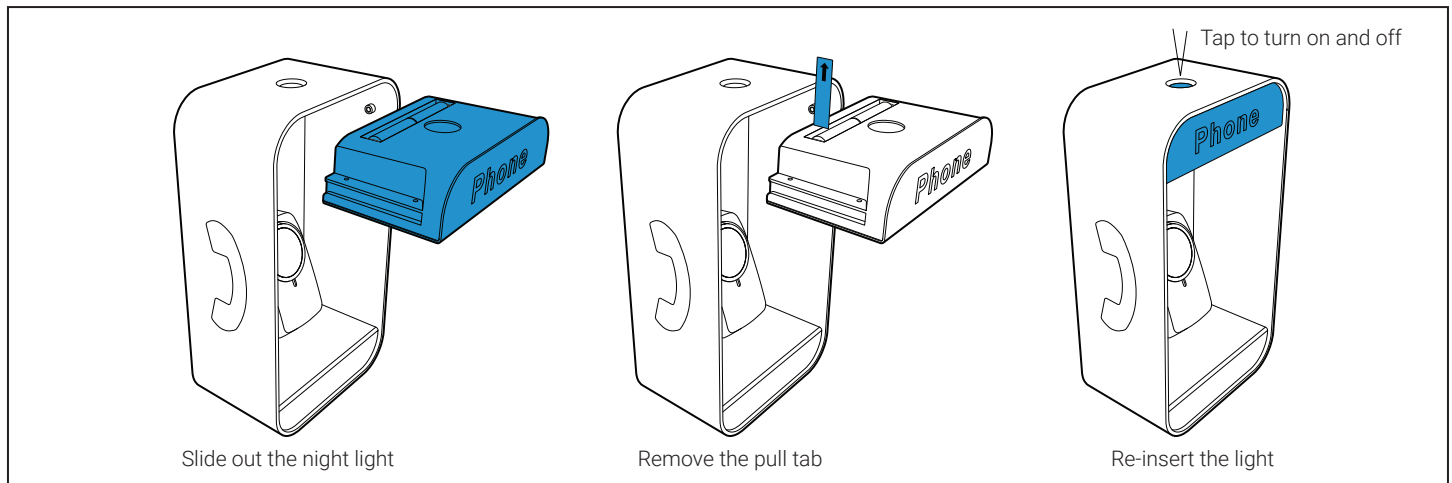
SMOOTH OPERATOR

MagSafe Charging Stand

Compatible with iPhone 12 and later

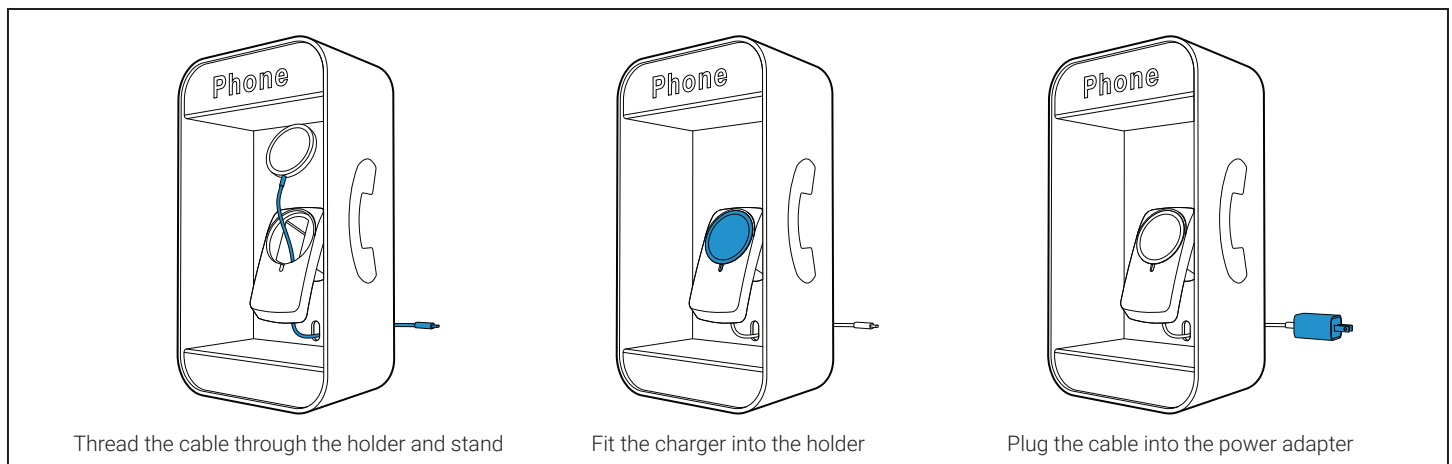
Using the night light

Remove the battery insulator pull tab before using



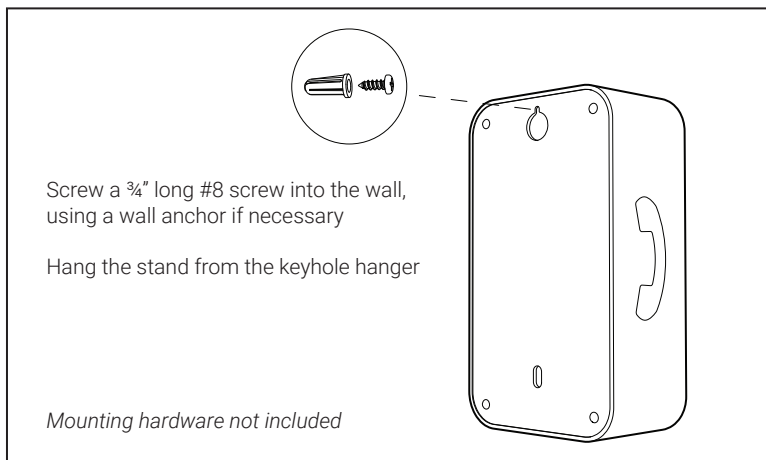
Inserting the MagSafe Charger

Requires an Apple MagSafe Charger and 20W USB-C Power Adapter (not included)



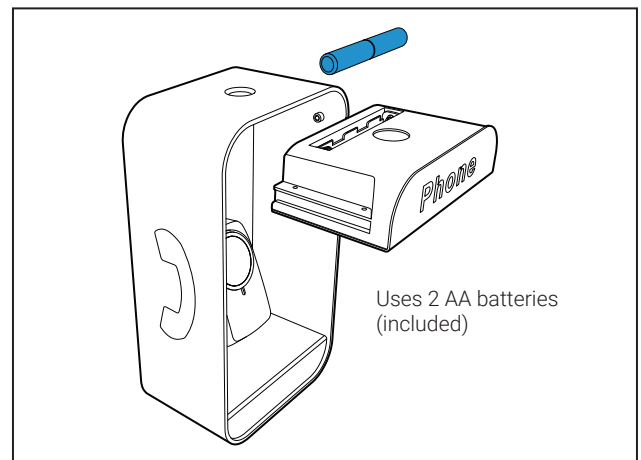
Mounting to a wall (optional)

Before mounting check if the cable can reach an outlet or if an extension is needed



Replacing the night light batteries

The night light will dim over time as the batteries deplete



Support

Need help, or have questions or comments?
Visit [heartyhardware.com](https://www.heartyhardware.com)
Or drop us a line: hello@heartyhardware.com



heartyhardware.com