

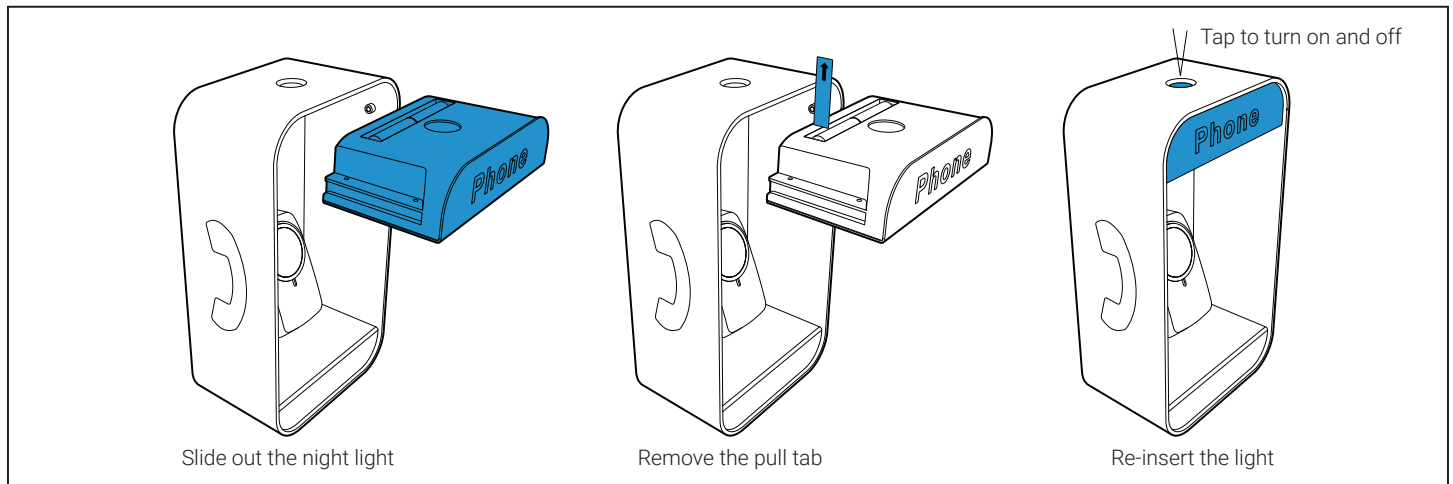
# SMOOTH OPERATOR

MagSafe Charging Stand

Compatible with iPhone 12 and later

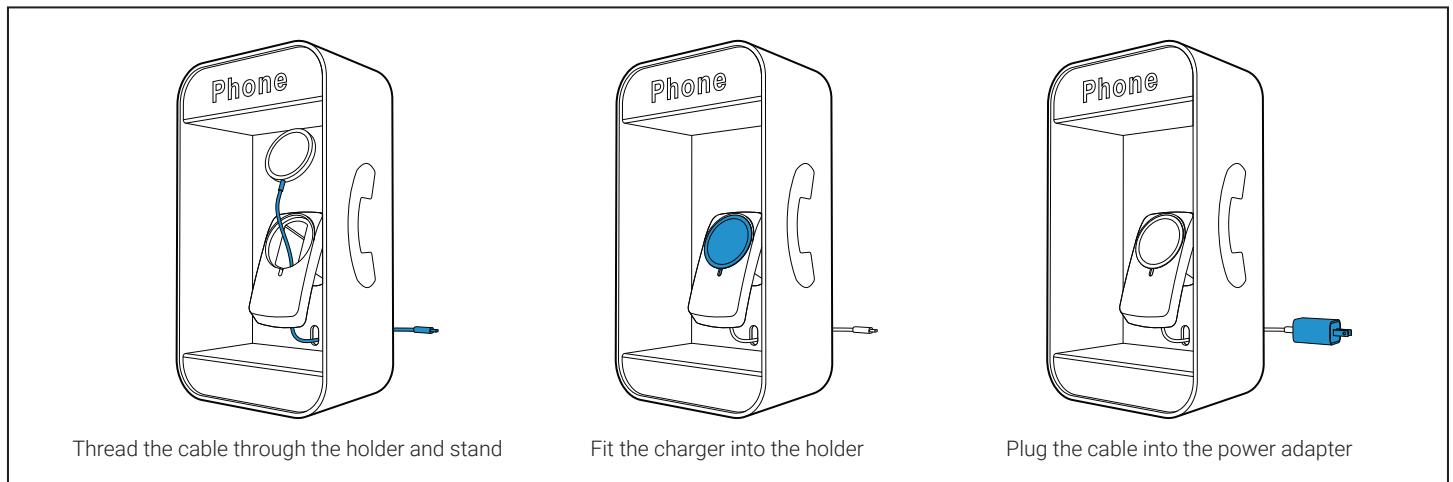
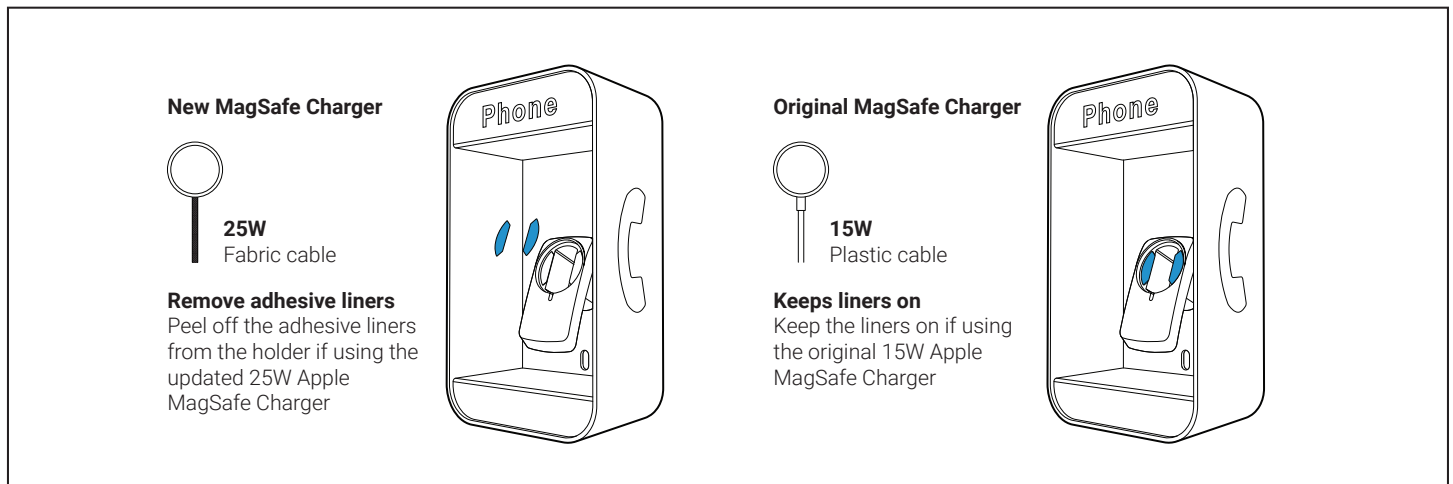
## Using the night light

Remove the battery insulator pull tab before using



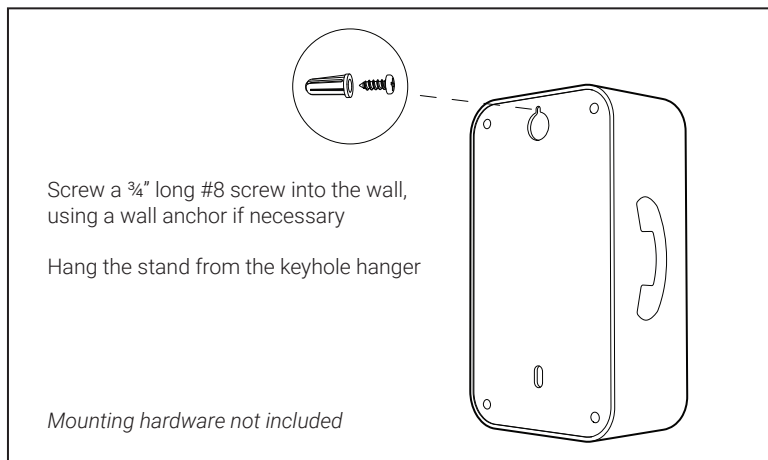
## Inserting the MagSafe Charger

Requires an Apple MagSafe Charger and USB-C Power Adapter (not included)



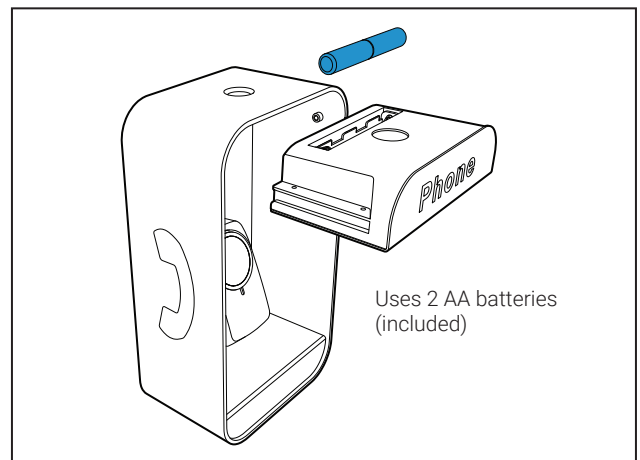
## Mounting to a wall (optional)

Before mounting check if the cable can reach an outlet or if an extension is needed



## Replacing the night light batteries

The night light will dim over time as the batteries deplete



## Support

Need help, or have questions or comments?  
Visit [heartyhardware.com](https://heartyhardware.com)  
Or drop us a line: [hello@heartyhardware.com](mailto:hello@heartyhardware.com)



heartyhardware.com